

Viking CCS Pipeline

**Environmental  
Statement Volume IV –  
Appendix 19-3: Draft  
Emergency Response  
Plan**

Document Reference: EN070008/APP/6.4.19.3

Applicant: Chrysaor Production (U.K.) Limited,  
a Harbour Energy Company  
PINS Reference: EN070008  
Planning Act 2008 (as amended)  
The Infrastructure Planning (Applications: Prescribed Forms  
and Procedure) Regulations 2009 - Regulation 5(2)(a)  
Date: October 2023

<b>PINS Reference</b>	<b>Document Reference</b>	<b>Document Revision</b>	<b>Date</b>
EN070008	EN070008/APP/6.4.19.3	Revision 1	October 2023

<b>Prepared by</b>	<b>Verified by</b>	<b>Approved by</b>
HT	MW	NP
EIA Principal Consultant	EIA Technical Director	IAPA Lead Director

Prepared by:

AECOM Limited  
Exchange Station  
Tithebarn Street  
Liverpool  
Merseyside  
L2 2QP

© AECOM Limited. All rights reserved.

## Table of Contents

1	Draft Emergency Response Plan .....	1
1.1	Emergency Response Measures to Major Accidents .....	1
1.2	Emergency Response Plan Potential Contents .....	2
1.3	Coordination with External Agencies .....	2

## Figures

Figure 1: Three-Level Response Structure .....	1
--	---

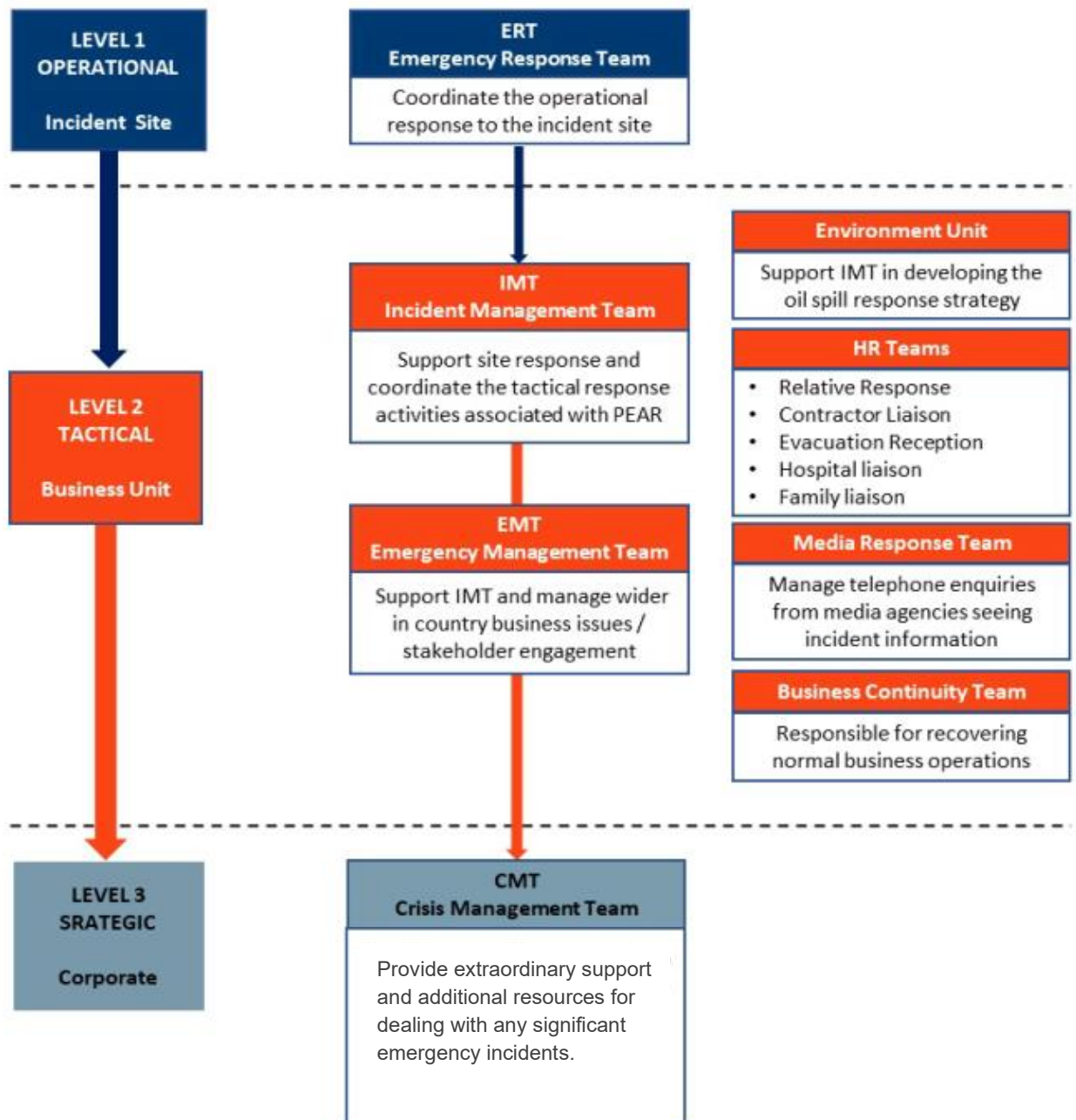
# 1 Draft Emergency Response Plan

## 1.1 Emergency Response Measures to Major Accidents

### Overview

- 1.1.1 The Harbour Energy Emergency Response and Crisis Management Standard will be the over-arching document upon which bespoke response plans for the project will be developed. The standard follows a three-level response structure where each level will have a specific focus, establishing a hierarchy of response that is structured to provide successive tiers of incident support depending upon the nature and scale of the incident.
- 1.1.2 The typical structure for current oil and gas operations is given below by way of illustration in Figure 1. This structure will be followed but the responsibilities will be adapted to ensure they are relevant for a carbon dioxide pipeline.

**Figure 1: Three-Level Response Structure**



## 1.2 Emergency Response Plan Potential Contents

1.2.1 The bespoke Viking CCS response plan may include information on the following areas:

- Details of the emergency response organisation;
- Emergency roles and responsibilities;
- Emergency equipment;
- Identified major accidents, including those to the environment and specific responses to each;
- Identified off-site emergencies (i.e. pipelines);
- Other non-major accident emergencies and security threats;
- Muster and evacuation plans for site personnel;
- Medical response plans;
- Arrangements for communication and co-ordination of emergency response;
- Details of any site alarms and public alert systems; and
- Actions by external emergency response organisation.

## 1.3 Coordination with External Agencies

1.3.1 Coordination with external emergency response agencies will be key to the response to an emergency event.

1.3.2 The external emergency response organisation will typically comprise:

- The local emergency services (Fire and Rescue Service, Ambulance Service and Police);
- Local authorities;

1.3.3 These may be supplemented by others such as:

- The Environment Agency;
- Coastguard; and
- Health Protection Agency.

1.3.4 In order to ensure any required response is efficient and effective Harbour will:

- Liaise with the emergency services during the preparation of emergency response plans;
- Ensure ongoing familiarisation visits are held with the emergency response crews; and
- Ensure suitable plans, maps and information are supplied to the emergency response organisations and that any such plans are kept up to date.

